



JOLIET JUNIOR COLLEGE
—1901—

2019-2023 Environmental Scan District 525 Demographics and Labor Market Trends

Joliet Junior College

December 2018

Institutional Research and Effectiveness

Table of Contents

Introduction	1
Characteristics by Race/Ethnicity	3
Characteristics by Age	4
Characteristics by Gender	7
Geographic Distribution of Students	9
Educational Attainment.....	16
Industry and Labor Market Analysis	21
Occupational Analysis.....	26
Labor Force.....	29

Introduction

Environmental scanning can be viewed as a kind of radar to scan the world systematically and signal the new, the unexpected, the major, and the minor¹. Institutions scan their environment to try and understand the external forces of change, as well as, to develop effective strategies to gain a competitive advantage by identifying threats and opportunities that may influence its current and future plans. The primary purpose of this document is to provide Joliet Junior College a brief overview of key trends in the area of the district’s demographics and labor market trends.

The scope of this report will be to provide projections about demographics and workforce trends in the Joliet Junior College District for 2019-2023. The report will break down the demographic composition of the JJC district in terms of race/ethnicity, age, gender, geographic distributions of students, educational attainment, and labor market trends including labor force participation and occupational sector changes.

The Joliet Junior College district spans seven counties and covers 1,442 square miles. The information used for the compilation of demographics and labor market trends will be mainly calculated using zip code level data for the JJC district where available. The JJC district characteristics will be compiled based on the following zip codes:

JJC District 525 Zip Codes Utilized			
60403	60432	60446	60481
60404	60433	60447	60487
60407	60434	60448	60490
60408	60435	60450	60491
60410	60436	60451	60541
60416	60437	60460	60544
60420	60439	60467	60585
60421	60440	60468	60586
60423	60441	60470	60935
60424	60442	60474	61313
60431	60444	60479	61360

¹ Developing Environmental Scanning/Forecasting Systems to Augment Community College Planning. (Morrison and Held, 1988).

-This Page Intentionally Left Blank-

Characteristics by Race/Ethnicity

The following Table is a brief analysis of all racial groups for the Joliet Junior College District. The information presented examines the characteristics aggregated from all zip codes, within the JJC district, as described in the introduction.

Table 1: Projected Overall Population Change (Number, Percent, and Racial/Ethnic Group) (2019-2023)

Race/Ethnicity	2019 Population	2023 Population	% of Total Projected	# Change	% Change
White, Non-Hispanic	491,400	484,286	65.3%	-7,114	-1.4%
Hispanic	128,868	137,031	18.5%	8,163	6.3%
Black/African American	68,697	70,708	9.5%	2,011	2.9%
Asian	33,317	36,410	4.9%	3,093	9.3%
Unknown/Other	11,415	12,102	1.6%	687	6.0%
American Indian or Alaskan Native	972	998	0.1%	26	2.7%
Native Hawaiian or Pacific Islander	92	95	0.0%	3	3.3%
Total	734,761	741,630	100.0%	6,869	0.9%

Table 1 informs us over the next 5 years:

- The JJC District Population has 734,761 residents
- The population for the JJC District is projected to increase by 0.9% or +6,869 residents.
- The population of Hispanics/Latinos is projected to increase by 6.3% or +8,163 residents.
- The White, Non-Hispanic population is projected to decrease by 1.4% or -7,114 residents.
- The Asian population is projected to increase by 9.3% or +3,093 residents.
- The Black/African American population is projected to increase by 2.9% or +2,011 residents.

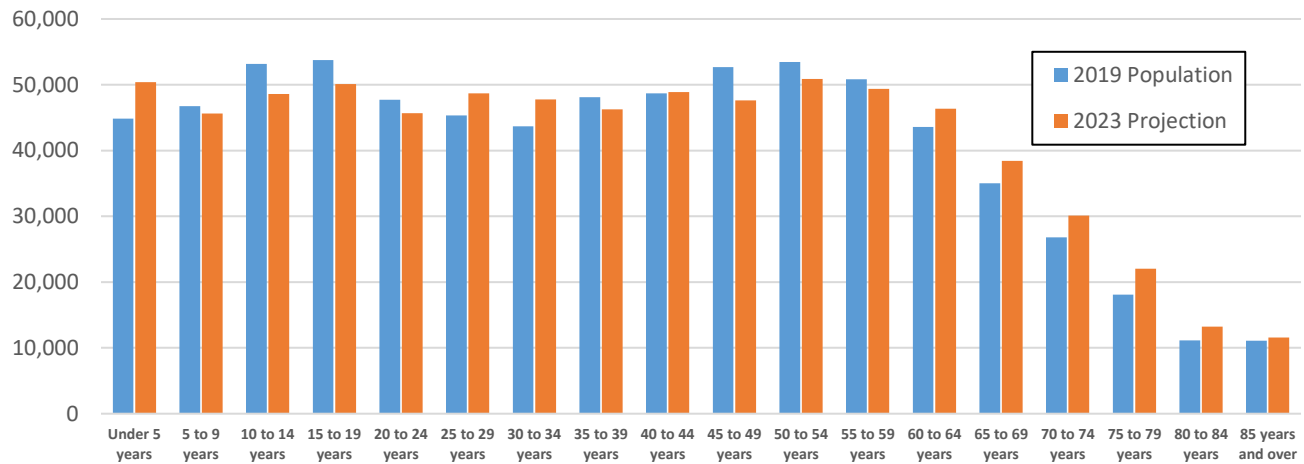
Possible Implications:

Changing educational needs for shifting demographics of population within the JJC District.

Characteristics by Age

This section displays the age distribution in regards to District population estimates by age category.

Figure 1: Population by Age (2019-2023)



Age	2019 Population	2023 Population	#Change	% Change
Under 5 years	44,853	50,400	5,547	12.4%
5 to 9 years	46,727	45,629	-1,098	-2.3%
10 to 14 years	53,159	48,574	-4,585	-8.6%
15 to 19 years	53,761	50,088	-3,673	-6.8%
20 to 24 years	47,737	45,696	-2,041	-4.3%
25 to 29 years	45,334	48,684	3,350	7.4%
30 to 34 years	43,663	47,758	4,095	9.4%
35 to 39 years	48,120	46,240	-1,880	-3.9%
40 to 44 years	48,697	48,892	195	0.4%
45 to 49 years	52,690	47,647	-5,043	-9.6%
50 to 54 years	53,469	50,881	-2,588	-4.8%
55 to 59 years	50,811	49,392	-1,419	-2.8%
60 to 64 years	43,585	46,380	2,795	6.4%
65 to 69 years	35,030	38,422	3,392	9.7%
70 to 74 years	26,799	30,128	3,329	12.4%
75 to 79 years	18,099	22,024	3,925	21.7%
80 to 84 years	11,147	13,234	2,087	18.7%

Age	2019 Population	2023 Population	#Change	% Change
85 years and over	11,080	11,561	481	4.3%
Total	734,761	741,630	6,869	0.9%

Figure 2: Projected Population Change by Age (2019-2023)

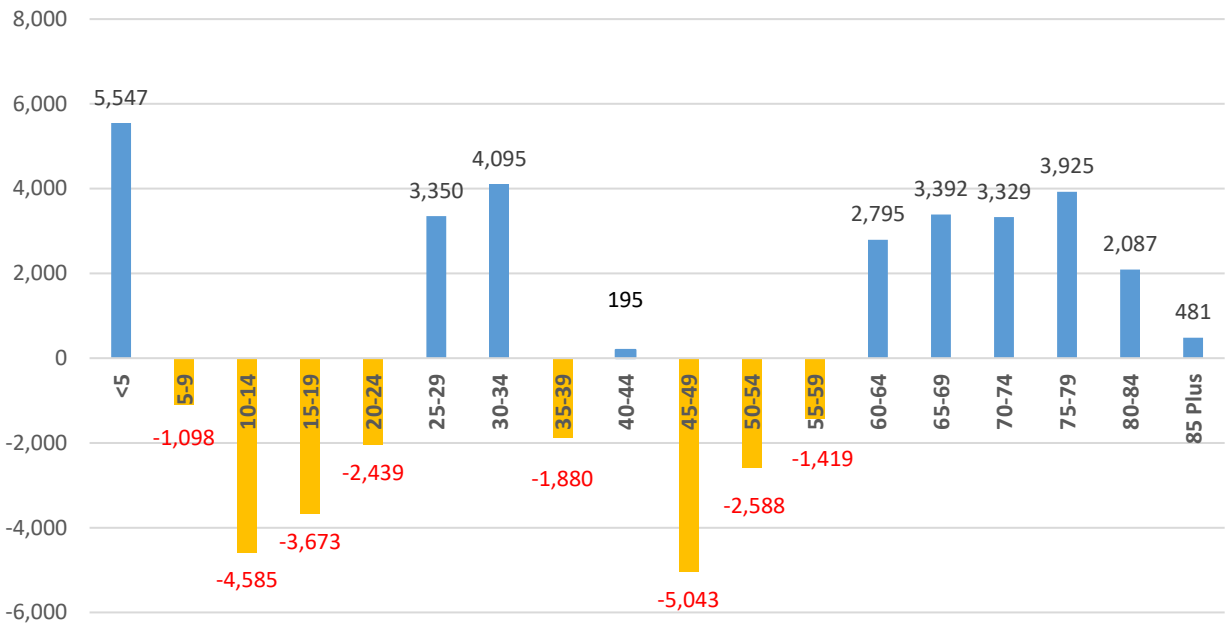


Figure 2 informs us from 2019-2023:

- Projections reflect an increase among residents in the 5 years and under age group, +5,547 individuals.
- Projections reflect an increase among residents in the age groups 25-34 years, +7,445 individuals.
- Projections reflect an increase among residents in the age group 60 years and above, +16,009 individuals.
- Projections reflect a decrease among residents in the age group 5-24 years, -11,795 individuals.
- Projections reflect a decrease among residents in the age group 35-59 years, -10,735 individuals.

Possible Implications:

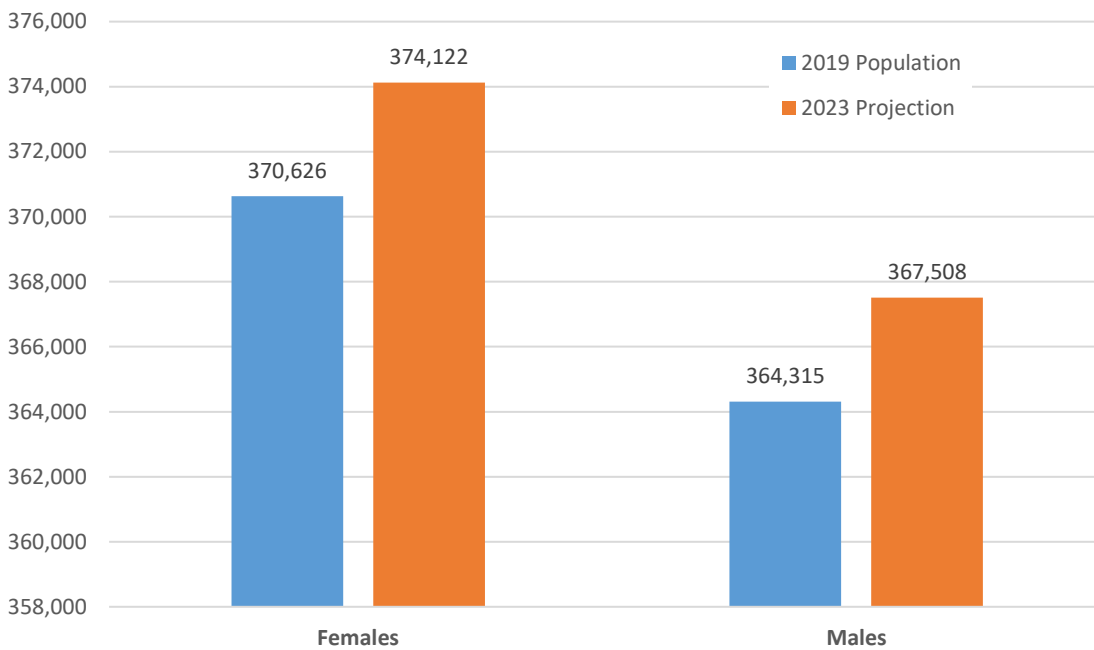
- Changing educational needs of an aging population as reflected by residents in the 60 Plus age groups.
- Decline of new students based on those 5-19 years of age.
- Decline in enrollment for those 35-59 years of age.

-This Page Intentionally Left Blank-

Characteristics by Gender

The section demonstrates the gender distribution District population estimates. The analysis reflects the projected characteristics for the next 5 years.

Figure 3: Projected Population Change by Age (2019-2023)



Gender	2019 Population	2023 Population	# Change	% Change
Females	370,626	374,122	3,495	0.9%
Males	364,315	367,508	3,373	0.9%
Total	734,761	741,630	6,869	0.9%

Figure 3 informs us from 2019-2023:

- Projections reflect an increase among residents for both genders.

Possible Implications:

Further exploration by gender and racial and ethnic areas of stakeholders (included in subsequent scanning sections).

-This Page Intentionally Left Blank-

Geographic Distribution of District Population

The current section displays the geographic distribution of the 2019 District population by zip code. This section also demonstrates the projected percent change in the estimated population for the JJC district by zip code through 2023 on the following page.

Table2: Projected Overall Population Change Number and Percent by JJC District Zip Codes (2019-2022)

Zip Code	City	2019 Population	2023 Projection	# Change	% Change
61313	Blackstone	220	218	-2	-1.0%
60490	Bolingbrook	23,178	23,596	418	1.8%
60440	Bolingbrook	58,257	60,277	2,020	3.5%
60407	Braceville	1,160	1,172	12	1.0%
60408	Braidwood	5,605	5,535	-70	-1.2%
60410	Channahon	10,058	9,912	-145	-1.4%
60416	Coal City	9,832	9,875	44	0.4%
60403	Crest Hill	19,376	20,007	631	3.3%
60420	Dwight	4,969	4,900	-68	-1.4%
60421	Elwood	3,807	3,835	28	0.7%
60935	Essex	1,229	1,206	-23	-1.8%
60423	Frankfort	33,451	33,152	-299	-0.9%
60424	Gardner	2,691	2,721	30	1.1%
60491	Homer Glen	24,967	24,746	-220	-0.9%
60434	Joliet	3,908	4,074	167	4.3%
60431	Joliet	20,311	20,593	282	1.4%
60436	Joliet	19,528	20,213	685	3.5%
60433	Joliet	18,384	19,195	811	4.4%
60432	Joliet	22,123	22,976	852	3.9%
60435	Joliet	52,663	54,017	1,354	2.6%
60437	Kinsman	251	254	3	1.3%
60439	Lemont	21,420	21,083	-337	-1.6%
60441	Lockport	39,054	39,264	210	0.5%
60442	Manhattan	10,625	10,463	-162	-1.5%
60444	Mazon	2,112	2,139	27	1.3%
60447	Minooka	10,777	10,958	181	1.7%
60448	Mokena	26,042	25,922	-120	-0.5%
60450	Morris	22,465	22,724	260	1.2%
60451	New Lenox	35,619	35,138	-482	-1.4%
60541	Newark	3,540	3,690	150	4.2%
60460	Odell	1,846	1,816	-30	-1.6%
60467	Orland Park	24,406	24,179	-227	-0.9%

Zip Code	City	2019 Population	2023 Projection	# Change	% Change
60468	Peotone	6,265	6,176	-89	-1.4%
60585	Plainfield	23,043	22,856	-187	-0.8%
60586	Plainfield	41,860	41,684	-177	-0.4%
60544	Plainfield	29,183	29,708	526	1.8%
60470	Ransom	599	584	-15	-2.5%
60446	Romeoville	43,176	44,255	1,079	2.5%
61360	Seneca	3,145	3,064	-81	-2.6%
60404	Shorewood	20,384	20,502	118	0.6%
60474	South Wilmington	817	826	9	1.1%
60487	Tinley Park	19,021	18,706	-315	-1.7%
60479	Verona	784	793	9	1.2%
60481	Wilmington	12,612	12,621	10	0.1%
Total		734,763	741,629	6,866	0.9%

The section displays the geographic distribution of the 2017 District population by zip code. This section also demonstrates the projected percent change in the estimated population for the JJC district by zip code through 2022 on the following page.

Figure 4: Geographic Distribution of JJC District Population 2019

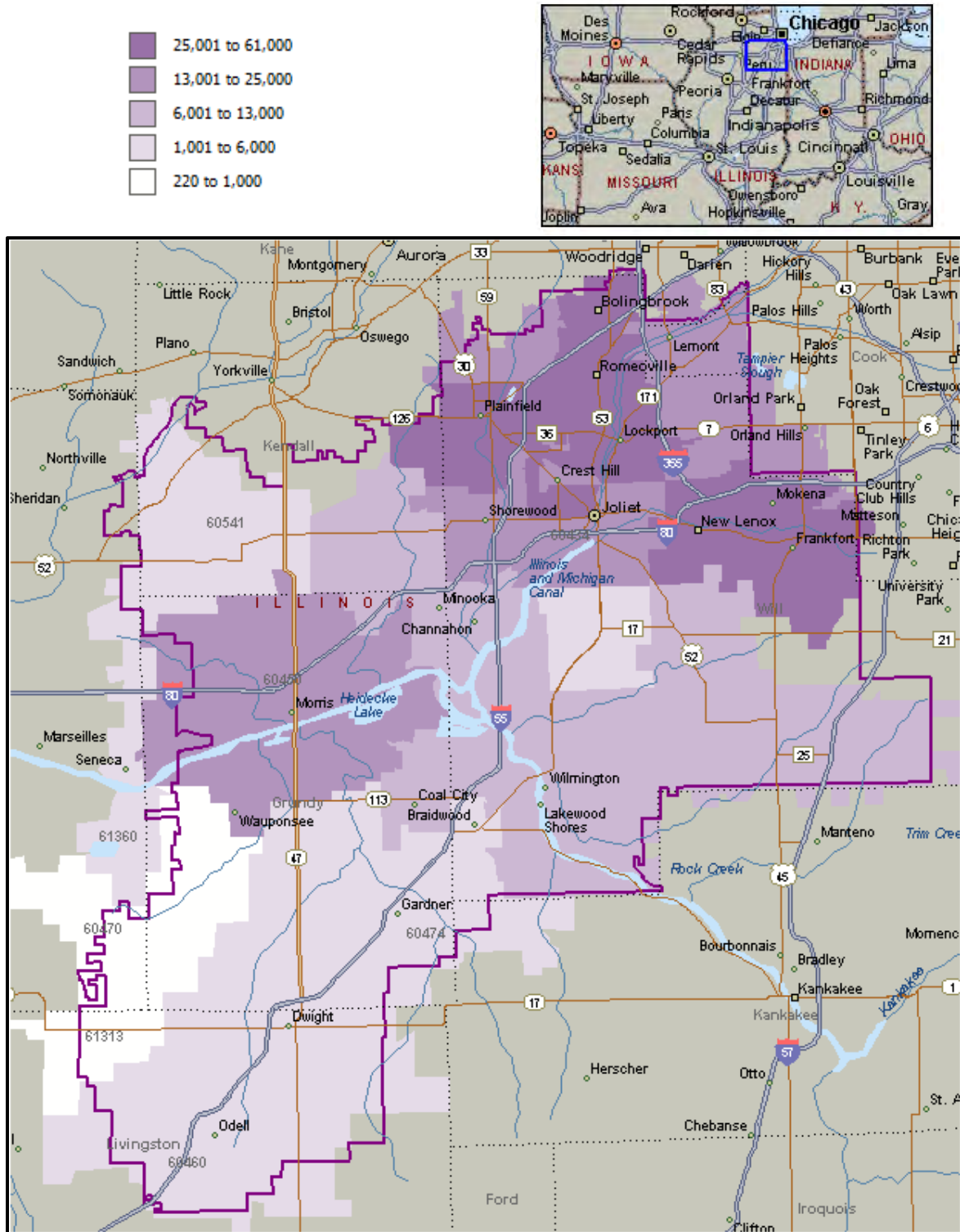
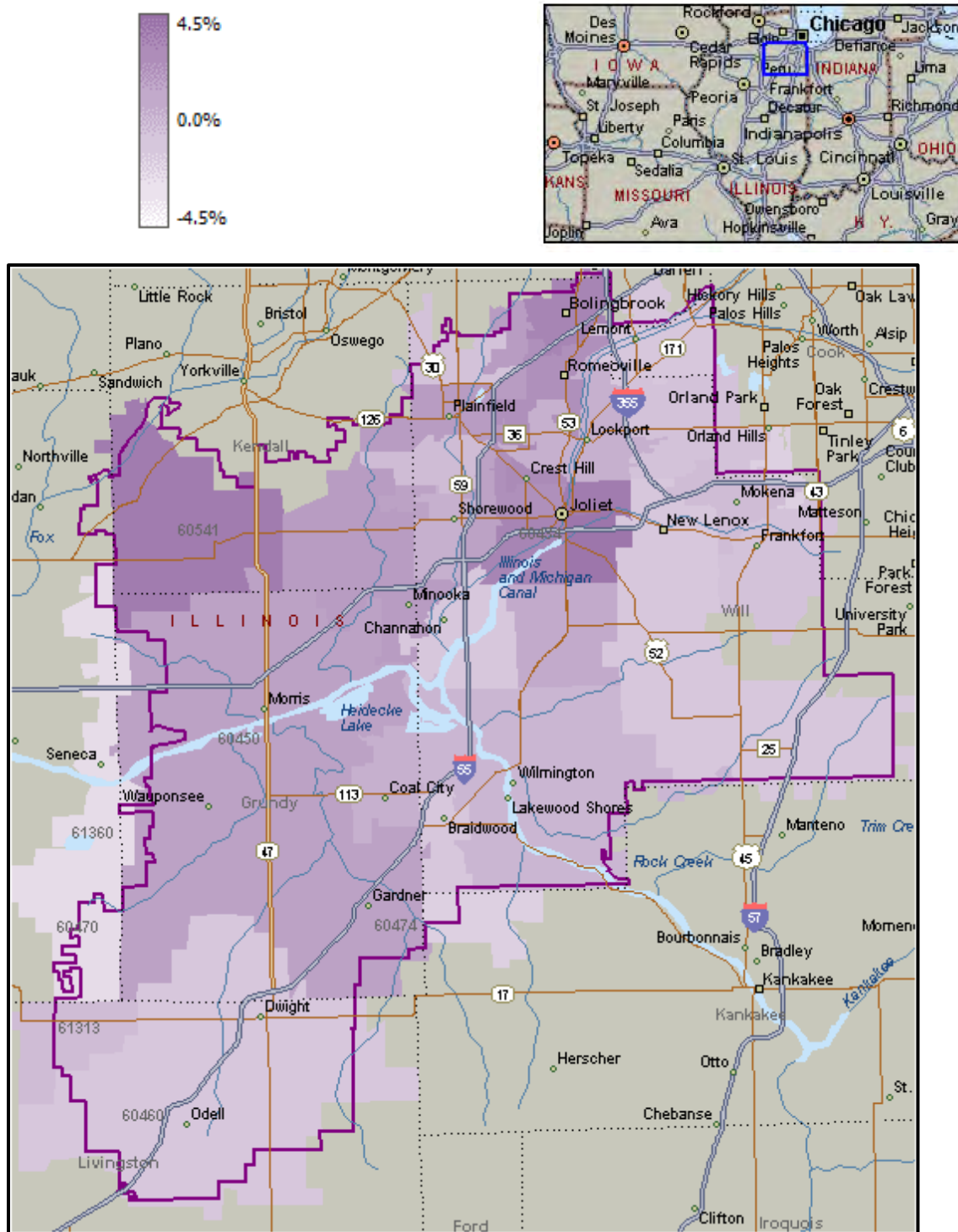


Figure 5 below represents the projected percent change in the population for the JJC District by zip code (2017-2022) and was created using Microsoft MapPoint software. Please note the darker the area indicates the expected percent change is higher than projected number of residents within that zip code.

Figure 5: Projected % Change in JJC District Population (2019-2023)



-This Page Intentionally Left Blank-

Educational Attainment

This section on Educational Attainment characterizes and describes the educational attainment of the JJC District population for adults 25 years old and above. Adult educational attainment is broken out by the following categories: (1) less than 9th grade (high school); (2) 9th to 12th grade; (3) high school diploma; (4) some college*; (5) associate’s degree; (6) bachelor’s degree; and (7) graduate degree or higher. Furthermore, educational attainment levels of the adult populations will be analyzed with a focus on associate and bachelor’s degree attainment within the JJC District by gender and race/ethnicity. This information may be useful for determining educational needs for different race/ethnic segments of the population.

**The “some college” category includes individuals who attended college but did not successfully obtain a degree and individuals who have received a post-secondary vocational award or professional certification but did not receive an associate or bachelor’s degree.*

The figures on the following pages reflect the educational attainment of the adult population over the age of 25 years. This may be utilized in identifying potential target markets and/or population segments with significant education attainment deficiencies.

Figure 6: Educational Attainment of Residents Over the Age of 25 Years (2019 Baseline 462,293)

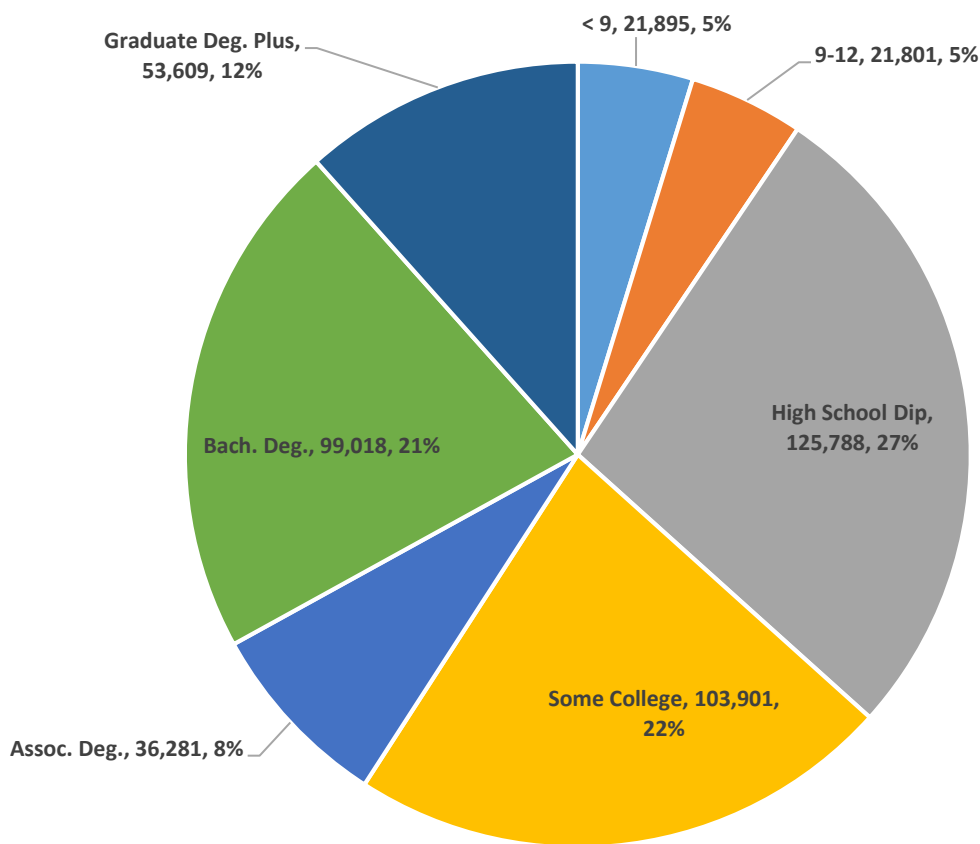


Figure 6 informs us in 2019:

- 27% of residents will have attained a high school diploma.
- 22% of residents will have had some college*.
- 21% of residents had attained a bachelor’s degree.
- 12% of residents will have a graduate degree or higher.
- 8% of residents will have attained an associate’s degree
- 5% of residents will have had between and 9-12 grade education.
- 5% of residents had less than a less than 9th grade (high school) education.

**The “some college” category includes individuals who attended college but did not successfully obtain a degree and individuals who have received a post-secondary vocational award or professional certification but did not receive an associate or bachelor’s degree*

Figure 7: Projected Change in Educational Attainment of Residents Over the Age of 25 Years (2019-2023)

Education Level	2019 Population	2023 Population	# Change	% Change
Less Than 9th Grade	21,895	23,133	1,238	5.7%
9th Grade to 12th Grade	21,801	22,558	757	3.5%
High School Diploma	125,788	129,993	4,205	3.3%
Some College	103,901	107,475	3,574	3.4%
Associate's Degree	36,281	36,970	689	1.9%
Bachelor's Degree	99,018	102,060	3,042	3.1%
Graduate Degree and Higher	53,609	55,063	1,454	2.7%
Total	462,293	477,252	14,959	3.2%

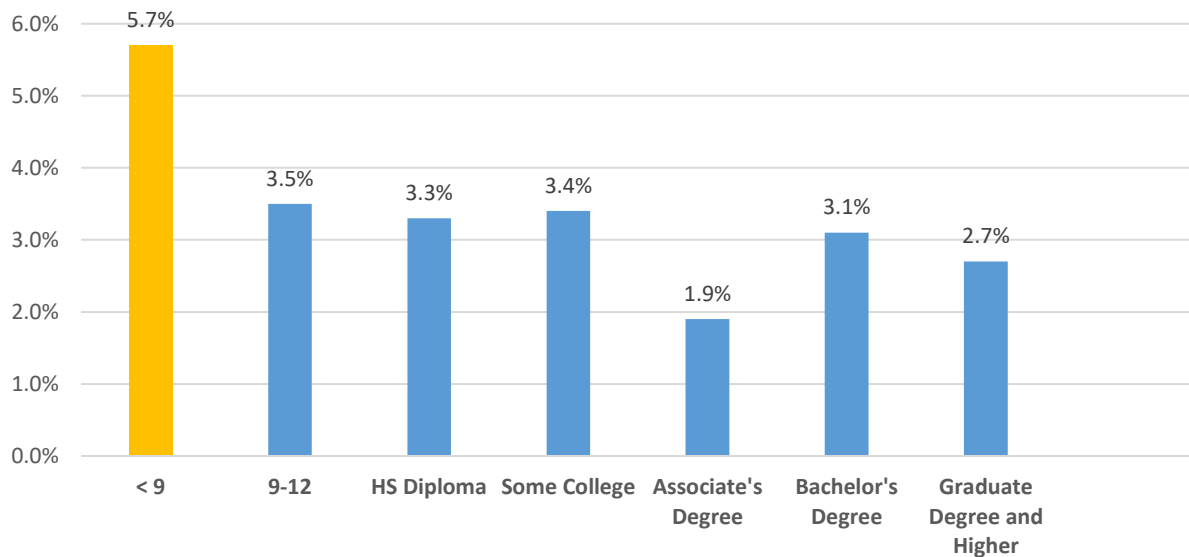


Figure 7 informs us in between 2019-2023:

- Attainment for residents' of a 9-12 grade education is projected to increase by 3.5%, suggesting more residents will advance to high school, but may not obtain a high school diploma.

Possible Implications:

- Setting measurable recruitment and enrollment goals to enroll more area residents.
- Setting measurable goals to increase area residents' attainment of associate's degree.
- Increased demand for access to college coursework through Dual Credit offerings.

Table 2: Distribution in Educational Attainment of Residents Over the Age of 25 Years for Condensed Categories by Race/Ethnicity (2019-2023)

Race/Ethnicity	2019 Population	2023 Population	2019 < Than HS	2019 HS Diploma	2019 College
White, Non-Hispanic	309,836	312,093	16,465	158,362	135,009
Black, Non-Hispanic	52,303	55,584	5,197	30,071	17,035
American Indian or Alaskan Native, Non-Hispanic	620	625	39	430	152
Asian, Non-Hispanic	28,224	31,406	967	6,078	21,180
Native Hawaiian or Pacific Islander, Non-Hispanic	101	106	10	50	41
Two or More Races, Non-Hispanic	3,894	4,200	330	1,930	1,634
White, Hispanic	62,598	67,847	19,249	30,472	12,877
Black, Hispanic	1,581	1,760	476	771	334
American Indian or Alaskan Native, Hispanic	1,452	1,682	449	707	297
Asian, Hispanic	479	565	146	233	100
Native Hawaiian or Pacific Islander, Hispanic	148	151	46	72	30
Two or More Races, Hispanic	1,057	1,233	322	515	220
Total	462,293	477,252	43,696	229,689	188,908

-This Page Intentionally Left Blank-

Industry and Labor Market Analysis

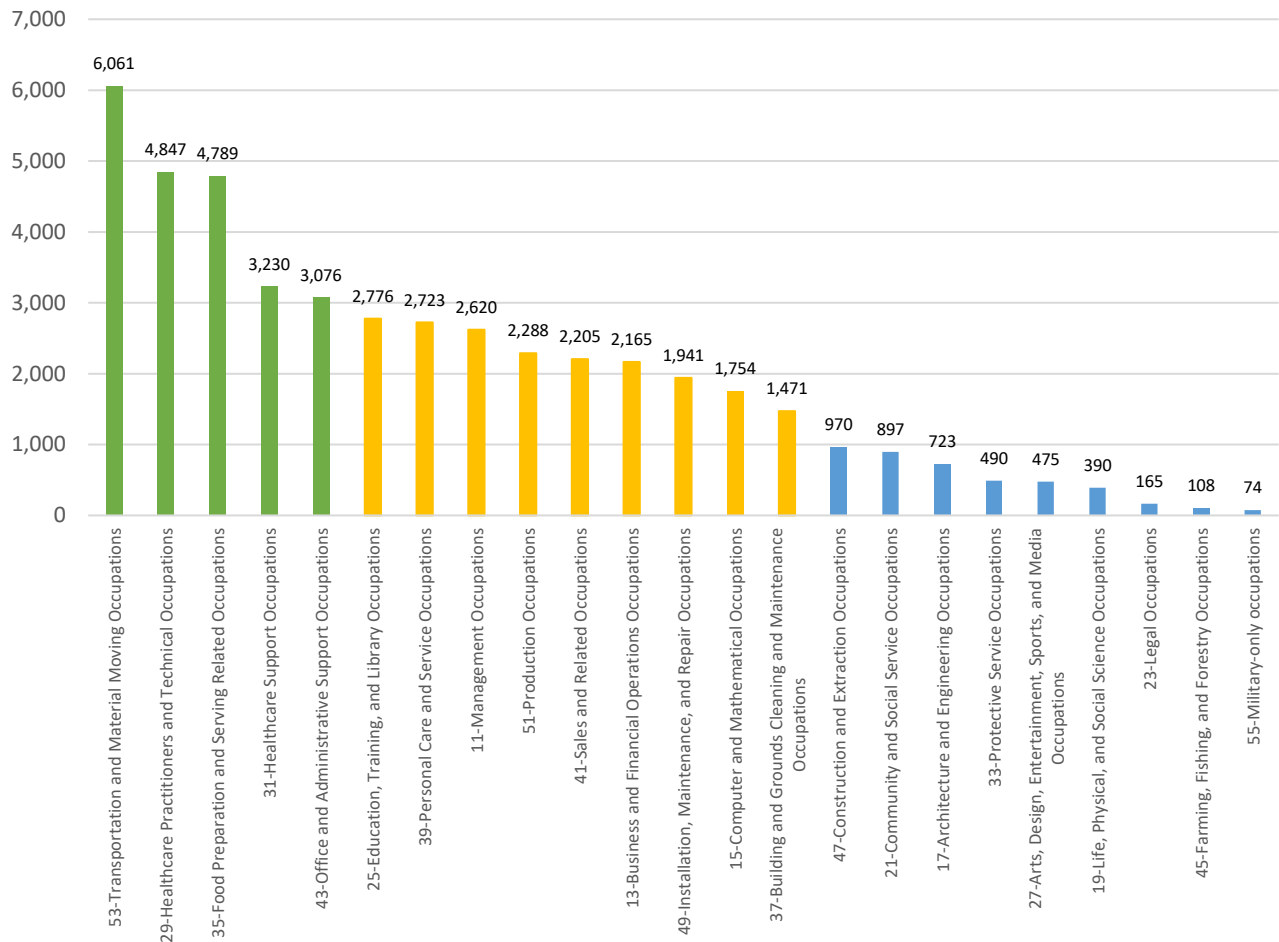
The following section includes industry projections not only for the JJC District zip codes, but also the seven counties JJC spans that may overarch the zip code areas to include all Will, Livingston, Grundy, Kendall, DuPage, La Salle, and Kankakee counties. The industry and occupation analysis below pulls data from these 44 zip codes and separate analysis for the seven counties from EMSI. Although JJC may not completely encompass these counties, understanding the needs of industry in and adjacent to the region is important.

The following table reflects the employment projections by the 2-Digit North American Industry Classification System (NAICS) code for the counties JJC spans. The North American Industry Classification System (NAICS) is the standard used by Federal statistical agencies in classifying business establishments for the purpose of collecting, analyzing, and publishing statistical data related to the U.S. business economy.

Table 3: Employment Projections by 2-NAICS Code and 7 County Area (2019-2023)

2-Digit NAICS	Description	2019 Jobs	2023 Jobs	# Change	% Change
11	Management Occupations	85,708	88,328	2,620	3.1%
13	Business and Financial Operations Occupations	57,801	59,966	2,165	3.7%
15	Computer and Mathematical Occupations	36,919	38,673	1,754	4.8%
17	Architecture and Engineering Occupations	17,422	18,145	723	4.1%
19	Life, Physical, and Social Science Occupations	7,224	7,614	390	5.4%
21	Community and Social Service Occupations	13,738	14,635	897	6.5%
23	Legal Occupations	6,187	6,352	165	2.7%
25	Education, Training, and Library Occupations	61,601	64,377	2,776	4.5%
27	Arts, Design, Entertainment, Sports, and Media Occupations	16,148	16,623	475	2.9%
29	Healthcare Practitioners and Technical Occupations	58,682	63,529	4,847	8.3%
31	Healthcare Support Occupations	28,365	31,595	3,230	11.4%
33	Protective Service Occupations	22,495	22,985	490	2.2%
35	Food Preparation and Serving Related Occupations	82,786	87,575	4,789	5.8%
37	Building and Grounds Cleaning and Maintenance Occupations	34,994	36,465	1,471	4.2%
39	Personal Care and Service Occupations	32,126	34,849	2,723	8.5%
41	Sales and Related Occupations	115,675	117,880	2,205	1.9%
43	Office and Administrative Support Occupations	162,072	165,148	3,076	1.9%
45	Farming, Fishing, and Forestry Occupations	2,565	2,673	108	4.2%
47	Construction and Extraction Occupations	42,714	43,684	970	2.3%
49	Installation, Maintenance, and Repair Occupations	41,504	43,445	1,941	4.7%
51	Production Occupations	81,109	83,397	2,288	2.8%
53	Transportation and Material Moving Occupations	97,725	103,786	6,061	6.2%
55	Military-only occupations	1,915	1,989	74	3.9%
Total		1,107,474	1,153,713	46,238	4.2%

Figure 8: Employment Projections – Change by 2-Digit NAICS Code and 7 County Area (2019-2023)



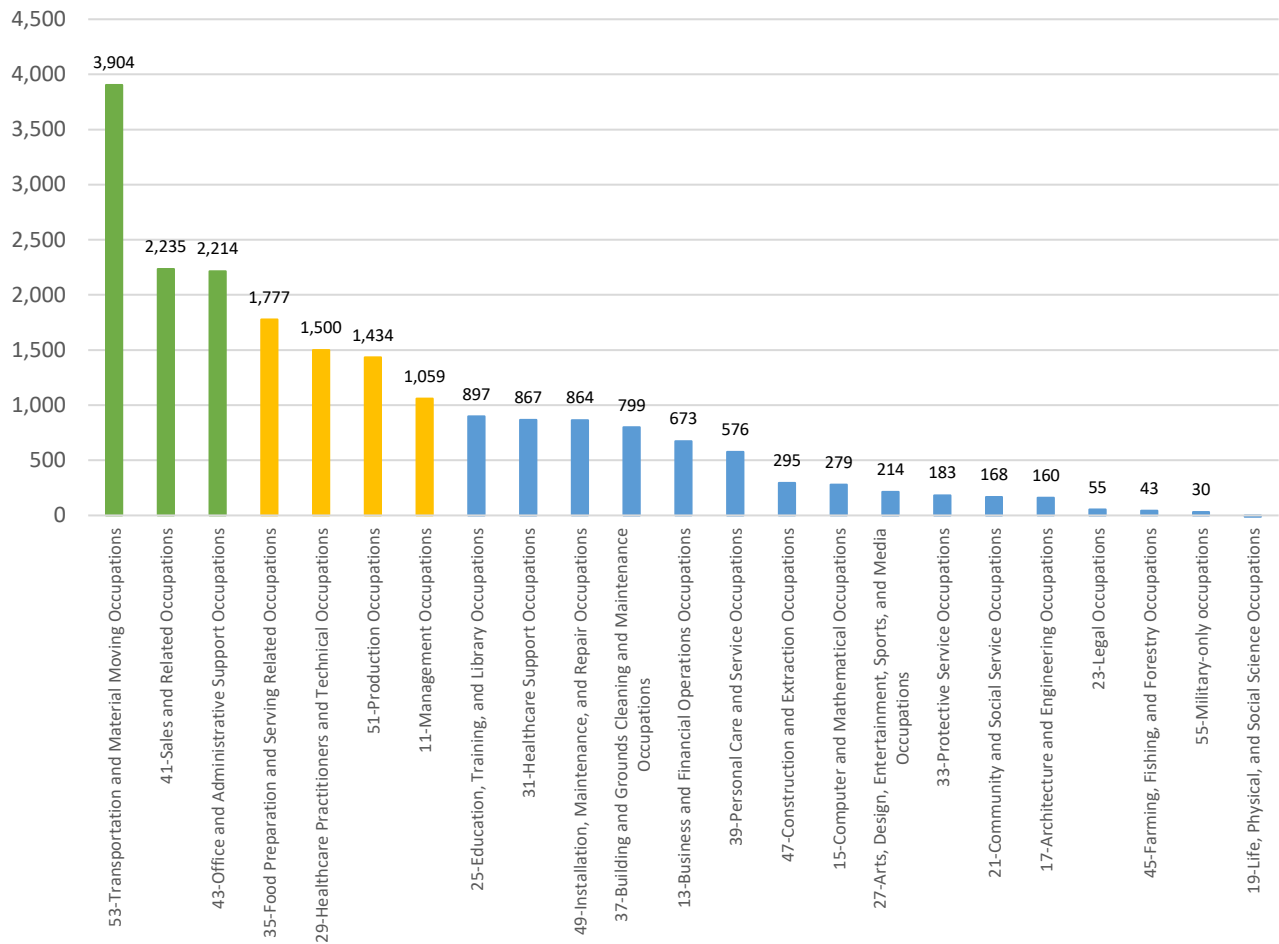
Projected Number Growth > or = to 3,000 Employees (2019-2023)

Projected Number Growth 1,000 – 2,999 Employees (2019-2023)

Table 4: Employment Projections by 2-NAICS Code and JJC District Zip Codes (2019-2023)

2-Digit NAICS	Description	2019 Jobs	2023 Jobs	# Change	% Change
11	Management Occupations	20,618	21,678	1,059	5.1%
13	Business and Financial Operations Occupations	11,798	12,471	673	5.7%
15	Computer and Mathematical Occupations	5,223	5,502	279	5.3%
17	Architecture and Engineering Occupations	4,104	4,264	160	3.9%
19	Life, Physical, and Social Science Occupations	1,954	1,942	-12	-0.6%
21	Community and Social Service Occupations	3,254	3,422	168	5.2%
23	Legal Occupations	1,368	1,422	55	4.0%
25	Education, Training, and Library Occupations	19,780	20,677	897	4.5%
27	Arts, Design, Entertainment, Sports, and Media Occupations	3,995	4,208	214	5.3%
29	Healthcare Practitioners and Technical Occupations	16,747	18,246	1,500	9.0%
31	Healthcare Support Occupations	7,730	8,597	867	11.2%
33	Protective Service Occupations	6,063	6,246	183	3.0%
35	Food Preparation and Serving Related Occupations	24,863	26,640	1,777	7.1%
37	Building and Grounds Cleaning and Maintenance Occupations	9,736	10,534	799	8.2%
39	Personal Care and Service Occupations	9,387	9,963	576	6.1%
41	Sales and Related Occupations	32,171	34,406	2,235	6.9%
43	Office and Administrative Support Occupations	41,226	43,440	2,214	5.4%
45	Farming, Fishing, and Forestry Occupations	478	521	43	9.0%
47	Construction and Extraction Occupations	14,419	14,714	295	2.0%
49	Installation, Maintenance, and Repair Occupations	11,738	12,602	864	7.4%
51	Production Occupations	21,313	22,747	1,434	6.7%
53	Transportation and Material Moving Occupations	33,695	37,599	3,904	11.6%
55	Military-only occupations	694	724	30	4.2%
Total		302,354	322,566	20,213	6.7%

Figure 9: Employment Projections – Change by 2-Digit NAICS Code and JJC District Zip Codes (2019-2023)



Projected Number Growth > or = to 2,000 Employees (2019-2023)

Projected Number Growth 1,000 – 1,999 Employees (2019-2023)

Growing Industry Sector within 7 County Region (2019-2023)

The following table summarizes the 2-digit Industry categories projected to experience significant growth (greater than or equal to 3,000 jobs) from the previous county analysis expanded by the 3-digit SOC sector for the JJC seven county region.

Table 5: Employment Projections expanded by 3-Digit SOC for 2-Digit NAICS Greater Than or Equal to 3,000 Employees within 7 County Region (2019-2023)

3-Digit SOC	Description	2019 Jobs	2023 Jobs	# Change	% Change
29-1000	Health Diagnosing and Treating Practitioners	36,320	39,586	3,266	9.0%
29-2000	Health Technologists and Technicians	21,307	22,802	1,495	7.0%
29-9000	Other Healthcare Practitioners and Technical Occupations	1,055	1,142	87	8.2%
Subtotal		58,682	63,529	4,848	8.3%
31-1000	Nursing, Psychiatric, and Home Health Aides	15,383	17,080	1,697	11.0%
31-2000	Occupational Therapy and Physical Therapist Assistants and Aides	3,164	3,780	616	19.5%
31-9000	Other Healthcare Support Occupations	9,818	10,734	916	9.3%
Subtotal		28,365	31,595	3,230	11.4%
35-1000	Supervisors of Food Preparation and Serving Workers	5,665	6,019	354	6.2%
35-2000	Cooks and Food Preparation Workers	19,904	20,772	868	4.4%
35-3000	Food and Beverage Serving Workers	47,863	51,124	3,261	6.8%
35-9000	Other Food Preparation and Serving Related Workers	9,354	9,660	306	3.3%
Subtotal		82,786	87,575	4,789	5.8%
43-1000	Supervisors of Office and Administrative Support Workers	7,323	7,587	264	3.6%
43-2000	Communications Equipment Operators	535	510	-25	-4.7%
43-3000	Financial Clerks	18,687	18,981	294	1.6%
43-4000	Information and Record Clerks	38,696	39,937	1,241	3.2%
43-5000	Material Recording, Scheduling, Dispatching, and Distributing Workers	41,114	42,220	1,106	2.7%
43-6000	Secretaries and Administrative Assistants	21,554	21,519	-35	-0.2%
Subtotal		162,072	165,148	3,076	1.9%
53-1000	Supervisors of Transportation and Material Moving Workers	3,221	3,444	223	6.9%
53-2000	Air Transportation Workers	584	619	35	6.0%
53-3000	Motor Vehicle Operators	37,345	39,414	2,069	5.5%
53-4000	Rail Transportation Workers	1,575	1,622	47	3.0%
53-5000	Water Transportation Workers	489	514	25	5.1%
53-6000	Other Transportation Workers	2,082	2,164	82	3.9%
Subtotal		97,725	103,786	6,061	6.2%
Overall Total		429,630	451,633	22,003	5.1%

Growing Industry Sector for JJC District Zip Codes (2019-2023)

The following table summarizes the 2-digit Industry categories projected to experience significant growth (greater than or equal to 2,000 jobs) from the previous zip code analysis expanded by the 3-digit SOC sector for the JJC zip codes that make up the district.

Table 6: Employment Projections expanded by 3-Digit SOC for 2-Digit NAICS Greater Than or Equal to 2,000 Employees within JJC District Zip Codes (2019-2023)

3-Digit SOC	Description	2019 Jobs	2023 Jobs	# Change	% Change
41-1000	Supervisors of Sales Workers	3,137	3,351	214	6.8%
41-2000	Retail Sales Workers	18,479	19,758	1,279	6.9%
41-3000	Sales Representatives, Services	3,649	3,801	152	4.2%
41-4000	Sales Representatives, Wholesale and Manufacturing	5,207	5,753	546	10.5%
41-9000	Other Sales and Related Workers	1,700	1,743	43	2.5%
Subtotal		32,171	34,406	2,235	6.9%
43-1000	Supervisors of Office and Administrative Support Workers	1,770	1,890	120	6.8%
43-2000	Communications Equipment Operators	119	115	-4	-3.4%
43-3000	Financial Clerks	4,339	4,481	142	3.3%
43-4000	Information and Record Clerks	8,969	9,516	547	6.1%
43-5000	Material Recording, Scheduling, Dispatching, and Distributing Workers	12,313	13,360	1,047	8.5%
43-6000	Secretaries and Administrative Assistants	5,169	5,248	79	1.5%
43-9000	Other Office and Administrative Support Workers	8,548	8,832	284	3.3%
Subtotal		41,226	43,440	2,214	5.4%
53-1000	Supervisors of Transportation and Material Moving Workers	1,209	1,361	152	12.6%
53-2000	Air Transportation Workers	163	176	13	8.0%
53-3000	Motor Vehicle Operators	12,010	13,100	1,090	9.1%
53-4000	Rail Transportation Workers	789	825	36	4.6%
53-5000	Water Transportation Workers	235	266	31	13.2%
53-6000	Other Transportation Workers	522	551	29	5.6%
53-7000	Material Moving Workers	18,768	21,320	2,552	13.6%
Subtotal		33,695	37,599	3,904	11.6%
Overall Total		107,093	115,446	8,353	7.8%

Occupational Analysis

Analyzing the top occupations in an area helps provide a better picture of a local community, including the types of work most individuals do as well as the skills required from the local labor force. The table below describes the top occupations and median hourly wages pulled from EMSI arranged by the 5-digit Standard Occupational Classification (SOC) code. The information reflects occupations with greater than or equal to 500 projected jobs between 2019-2023 for the seven county area of Will, Grundy, Livingston, Kendall, DuPage, LaSalle, and Kankakee.

Table 7: Occupational Projections by SOC Greater Than or Equal to 500 Employees (2019-2023)

SOC	Description	2019 Jobs	2023 Jobs	# Change	% Change	Median Hourly Earnings
11-1021	General and Operations Managers	22,696	23,600	904	4%	\$49.08
15-1132	Software Developers, Applications	6,446	7,103	657	10%	\$41.10
29-1123	Physical Therapists	3,209	3,794	585	18%	\$43.97
29-1141	Registered Nurses	16,923	18,318	1,395	8%	\$34.32
31-1011	Home Health Aides	6,103	7,223	1,120	18%	\$11.89
31-1014	Nursing Assistants	8,586	9,133	547	6%	\$12.75
35-3021	Combined Food Preparation and Serving Workers, Including Fast Food	25,810	28,151	2,341	9%	\$9.25
35-3031	Waiters and Waitresses	13,589	14,172	583	4%	\$8.82
37-2011	Janitors and Cleaners, Except Maids and Housekeeping Cleaners	18,407	19,245	838	5%	\$12.26
39-9021	Personal Care Aides	7,732	9,194	1,462	19%	\$11.46
41-4012	Sales Representatives, Wholesale and Manufacturing, Except Technical and Scientific Products	17,732	18,436	704	4%	\$27.97
43-4051	Customer Service Representatives	20,838	21,368	530	3%	\$15.69
43-5081	Stock Clerks and Order Fillers	22,203	22,872	669	3%	\$11.59
53-3032	Heavy and Tractor-Trailer Truck Drivers	17,323	18,437	1,114	6%	\$22.32
53-7062	Laborers and Freight, Stock, and Material Movers, Hand	31,112	33,384	2,272	7%	\$11.62
53-7064	Packers and Packagers, Hand	9,849	10,493	644	7%	\$10.37

The following table describes the top occupations and median hourly wages pulled from EMSI arranged by the 5-digit Standard Occupational Classification (SOC) code. The information reflects occupations with greater than or equal to 250 projected jobs 2019-2023 for all JJC District Zip Codes.

Table 8: Occupational Projections by SOC Greater Than or Equal to 250 Employees (2019-2023)

SOC	Description	2019 Jobs	2023 Jobs	# Change	% Change	Median Hourly Earnings
11-1021	General and Operations Managers	5,758	6,163	405	7%	\$47.41
29-1141	Registered Nurses	4,183	4,515	332	8%	\$31.73
35-3021	Combined Food Preparation and Serving Workers, Including Fast Food	8,011	8,894	883	11%	\$9.04
37-2011	Janitors and Cleaners, Except Maids and Housekeeping Cleaners	4,456	4,955	499	11%	\$11.99
41-2011	Cashiers	7,714	8,073	359	5%	\$9.48
41-2031	Retail Salespersons	9,797	10,637	840	9%	\$10.26
41-4012	Sales Representatives, Wholesale and Manufacturing, Except Technical and Scientific Products	4,689	5,187	498	11%	\$25.39
43-4051	Customer Service Representatives	4,647	4,963	316	7%	\$15.18
43-5071	Shipping, Receiving, and Traffic Clerks	2,276	2,530	254	11%	\$13.92
43-5081	Stock Clerks and Order Fillers	7,467	8,154	687	9%	\$10.75
51-9199	Production Workers, All Other	2,788	3,075	287	10%	\$11.83
53-3032	Heavy and Tractor-Trailer Truck Drivers	5,774	6,306	532	9%	\$21.58
53-3033	Light Truck or Delivery Services Drivers	2,867	3,179	312	11%	\$15.11
53-7051	Industrial Truck and Tractor Operators	2,244	2,588	344	15%	\$14.08
53-7062	Laborers and Freight, Stock, and Material Movers, Hand	11,165	12,782	1,617	14%	\$10.48
53-7064	Packers and Packagers, Hand	3,566	4,032	466	13%	\$9.49

Labor Force

The labor force participation rate represents the proportion of the population that is in the labor force. Labor force participation rate is sensitive to demographic change because the participation rates vary across age and gender categories. The participation rate below demonstrates the distribution of the labor force across different age groups by gender.

The current labor force for the JJC District is estimated to be 1,088,883 for the seven county area of Will, Grundy, Livingston, Kendall, DuPage, LaSalle, and Kankakee.. The figure below reflects the current labor force distribution participation rates by age category and race/ethnicity.

Figure 10: Labor Force Participation Rate by Age Category

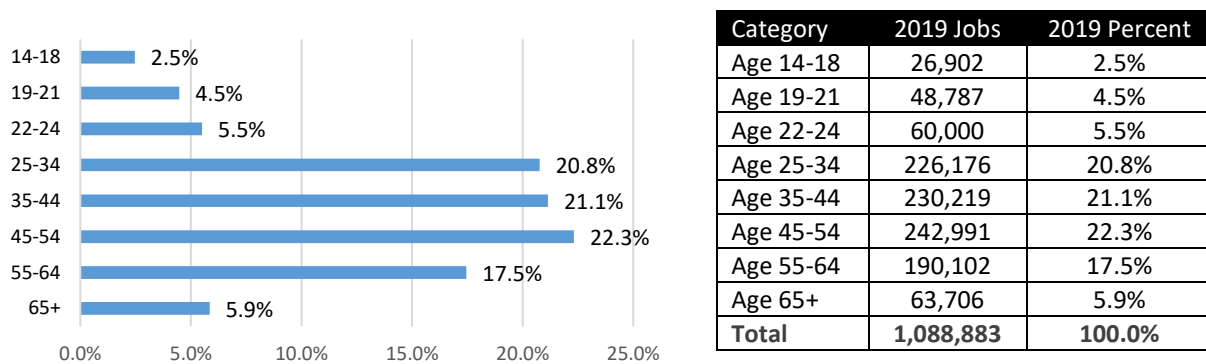


Figure 11: Labor Force Participation Rate by Gender

