



Let's Get Together

An EFE-Community College Partnership That Works!



Introduction

- **Cassie Blickem**, Director, Valley Education for Employment System (EFE #130)
- **Alyson Gaspar**, Career and Technical Education Services Manager, Waubonsee Community College (District 516)

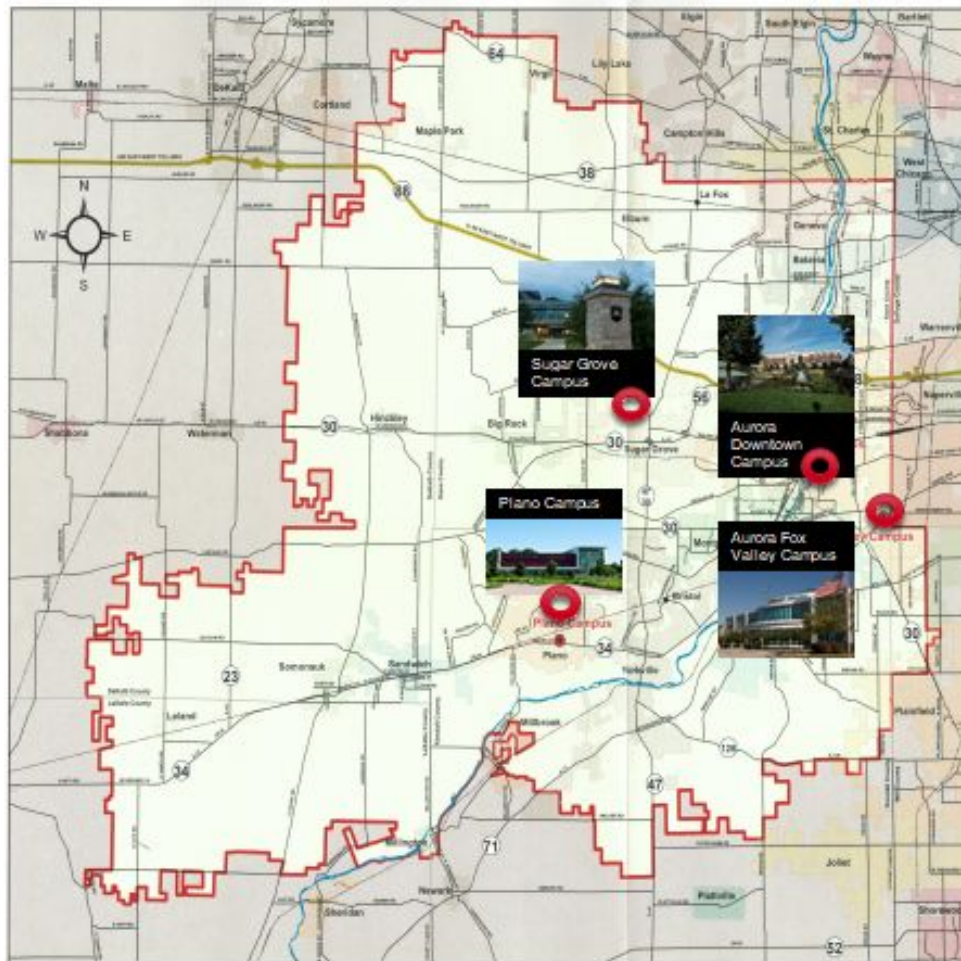


VALEES

VALEES serves 17 member districts, two area vocational centers, and a special education cooperative in portions of DeKalb, Kane, Kendall, LaSalle and Lee counties.

Member districts include: Batavia, Earlville, East Aurora, Fox Valley Career Center, Geneva, Hinckley-Big Rock, Indian Creek, Indian Valley Vocational Center, Kaneland, Plano Area Special Education Cooperative, Leland, Newark, SD308 Oswego, Paw Paw, Plano, Sandwich, Serena, Somonauk, West Aurora and Yorkville

Waubonsee Community College



Community College District 516
serving portions of Kane, Kendall, DeKalb, LaSalle, and Will Counties

OUR STUDENTS } 14,252
Credit students enrolled at Waubonsee.

18% enrolled fulltime
82% enrolled parttime



■ Caucasian - 58.9%

■ Nat. Hawaiian/Pac. Islander - .2%

■ Hispanic or Latino - 26.4%

■ Black or African American - 8.2%

■ Asian - 3.5%

■ Amer. Indian/Alaskan Native - .3%



Strategies

- Communication Strategies
- Shared Facilities
- Blended Funding
- Professional Development Collaboration
- Implementing Perkins V-Comprehensive Local Needs Assessment



Communication Strategies

- Consistency
 - Standing appointments and/or routine phone calls
- Consideration
 - Invitation/participation in relevant committee meetings
 - Information sharing (events, resources, etc.)
- Coordination (and organization)
 - Event coordination
 - Develop/share calendars to promote meeting/event success
 - Involves various Waubonsee departments: Admissions, School District Partnerships, Registration and Records, Business and Career Technologies, Health Professions and Public Service



Shared Facilities

- VALEES office located on Waubonsee's Sugar Grove Campus
 - Nominal rent for office space
 - Access to all meeting spaces on campus
 - VALEES office is part of long term space utilization plan
- Current arrangement influences collaboration efforts
 - Facilitates regular face to face meetings with Waubonsee Departments
 - Allows for quick check in meetings as needed
 - Offers Waubonsee the opportunity to showcase campus to secondary teachers and administrators on a regular basis



Blended Funding

- Joint professional development events for teachers and faculty
 - Speaker/Presenter fees
 - Meeting expenses
 - Use of facilities (meeting space, IT support)
- Student career events including those aligned with PaCE framework
 - Transportation support for high schools
 - Use of facilities (classrooms space, IT support, access to CTE labs)
- Student of the Year Competitions
 - Participation from postsecondary faculty
 - Hands-on support from Perkins administrator

Early Childhood Education Visit Day



Microsoft DigiGirlz



Automotive Open House



Welding Student of the Year





Professional Development Collaboration

- Strategically identifying common needs
 - Shared business advisories and program committees, identify needs of both levels
 - Building Partnerships for America's Future
 - Experiential Learning Course for Graduate Credit
 - Summer Counselor Institute
 - CIS communication workshop
 - CNC Training: Waubensee faculty instructing secondary teachers
 - Bus Tour for VIA Manufacturers



PD Collaboration: CNC Training

- CNC Training
 - Program committee visit to Technology and Manufacturing Association (TMA)
 - Identified training opportunity
 - Additional opportunities for collaboration
 - Waubonsee faculty presentation in CNC lab at Building Partnerships
 - Business advisory meeting offered additional opportunity for collaboration
 - End result: week-long training by Waubonsee faculty in CNC lab for secondary teachers



PD Collaboration: CIS Workshop

- Incorporating Communication Skills into Computer Information Systems Coursework
 - Business advisory meeting: Employers recommend need for improved communication skills.
 - Collaboration with Waubensee Communication faculty
 - End result: Workshop presented at Building Partnerships
 - Specific activities provided for incorporation into postsecondary and secondary lesson plans



Implementing Perkins V--Local Needs Assessment

- Waubonsee/Perkins and VALEES initial discussions since Spring 2019
 - Identifying data that is currently accessible
 - Identifying gaps in data that need to be addressed
 - Identifying stakeholders to be included in the process
- Planned activities (for now)
 - Coordination with American Job Center/One-Stop in LWIA 5
 - Define the terms for our region
 - Intend to hold large stakeholder event
 - Budgeted funds for a facilitator



Let's Get Together!

- Do you have any strategies you plan to use to address the CLNA?
- What is working for you?
- What is one partnership success you can share?



Takeaways

- EFE-Community College collaboration is required in Perkins V.
- Focus on the benefits of partnership and consider how to improve perceived negative aspects.
- Identify the strengths each entity brings to the partnership and utilize the information to bolster any perceived deficiencies.



Contact Information

- **Cassie Blickem**
Director, VALEES
cblickem@waubonsee.edu
630-466-2905
- **Alyson Gaspar**
CTE Services Manager, Waubonsee Community College
agaspar@waubonsee.edu
630-466-2846